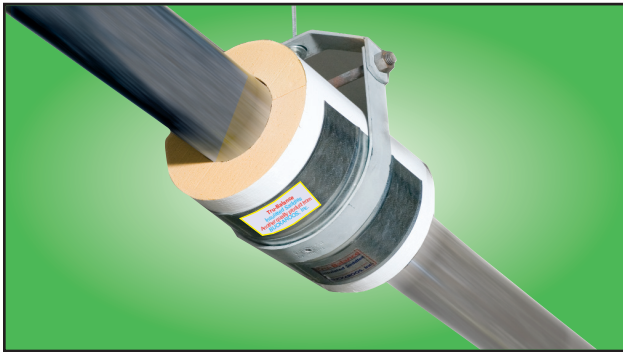




Tru-Balance 2550FS Insulated Saddles

Insulation meets the stringent 25/50 Flame-Smoke Ratings of ASTM E-84



**2550FS Insulated Saddle Saves Energy!
Saves Labor! Saves Money!**

Description

The Model 2550FS insulated saddle is the premier 25-50 Flame/Smoke rated pre-insulated saddle system in the industry today for commercial piping systems to 250° F. The 2550FS consist of a rigid 2.5 PCF phenolic foam pipe insulation designed for piping to 8" Iron Pipe Size, and 5 PCF phenolic foam pipe insulation for piping from 9" to 30" Iron Pipe Size.

The product also features a superior "New" vapor retardant facing which is ideal for cold piping systems. The 2550FS product has no known nutrients that promote mold or fungus problems. The 2550FS also features a flared edge standard Rib or Short-Rib (Patent Pending) Saddle for a perfect fit inside the clevis hanger, along with a premium self-seal acrylic adhesive tape that secures and seals the pipe insulation in place. The Short-Rib Saddle feature is available for the popular insulation O.D.'s.

Features and Benefits

- Insulation and facing each meet 25-50 Flame/Smoke ratings per ASTM E-84 on a component basis, which makes the product ideal for piping running through air plenums, or projects demanding the 25-50 Flame/Smoke rating throughout the building.
- A rigid 2.5 PCF and 5 PCF insulation that can be used on virtually all piping systems operating to 250° F, for piping to 30" Iron Pipe Size.
- Excellent compressive strength and damage resistance.
- Pipe Insulation and "New" next generation vapor retardant jacketing do not contribute to mold, mildew bacteria or fungus problems.

- Extremely low "K" factor of .13 at 75° mean temperature.
- Excellent resistance to moisture penetration due to its high closed cell structure.
- Insulation and facing provide low moisture vapor permeability.
- 100% CFC and HCFC free makes the insulation environmentally safe.
- Superior "New" durable Vapor Retarder Jacket with a low perm rating.
- Extended insulation length past the saddle base allows for a secure tape closure for the adjoining pipe insulation on each side of the 2550FS insulated saddle.
- Each saddle features a standard or a partial Short-Rib (patent pending) center rib for a perfect fit inside the clevis hanger and a unique flared edge to prevent damage to the vapor retardant facing and insulation.
- Each unit has a genuine "Quick-Inspect" Tru-Balance sticker applied at the bottom of each saddle for easy jobsite engineer or inspector identification after application.
- Unique "Safe-Pack" packaging protects the insulated support during shipment to the jobsite.

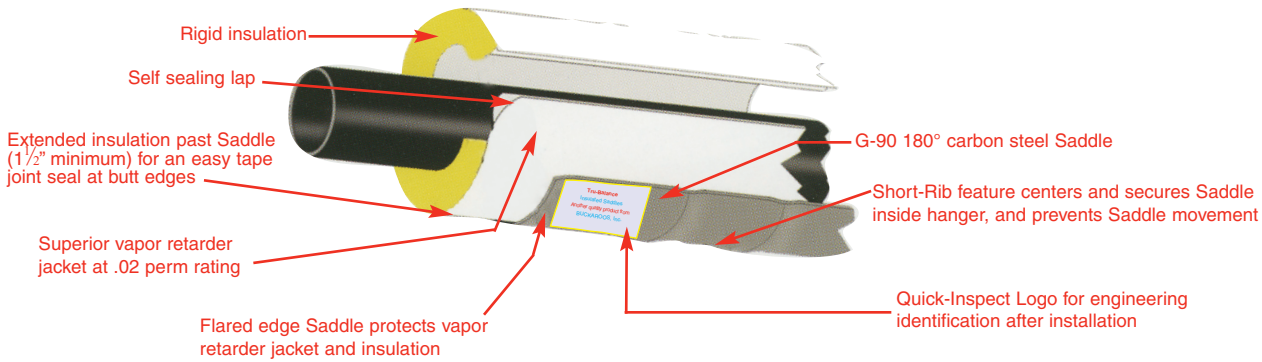
Applications

Ideal for indoor use on all plumbing, heating, chilled water and refrigeration piping from -290° F to +250° F. Because of the insulations excellent thermal performance and low perm rated vapor retarder jacket, it is the perfect choice for chilled water and other cold piping systems at hanger locations, where most failures are known to occur. The 2550FS product is ideal for use in schools, hospitals, offices, hotels, food plants, breweries and pharmaceutical plants.

Guide Specifications

Wherever pipe insulation passes through a hanger location, Tru-Balance 2550FS Insulated Saddles shall be installed at all piping systems operating to +250° F. Insulation density of 2.5 PCF shall be used for all piping to 8" IPS, and 5 PCF shall be used on all piping systems from 9" IPS to 30" IPS.

2550FS Insulated Saddle



Technical Data – 25/50 Flame-Smoke Rated Phenolic Foam Pipe Insulation

Physical Property	2.5 PCF	5 PCF	Specification
Recommended Pipe Sizing	To 8" IPS	9" – 30" IPS	
Thermal Conductivity Btu-in./hr-ft ² ·°F@75°F	.13	.21	ASTM C-518
Service Temperature Limits	-290° F to +250° F		
Compressive Strength Parallel to rise Perpendicular to rise	29 PSI 17.5 PSI	90 PSI 70 PSI	ASTM D-1621
Water Absorption By volume	.5%	.5%	ASTM D-209
Water Vapor Permeability	.117 perm inch	Max .02	ASTM E-96
Specific Heat	.45 Btu/lb.° F		
Closed Cell Content	Min. 92%	Min. 95%	ASTM D-2856
Surface Burning Testing Flame/Smoke Rating	<25/50	<25/50	ASTM E-84

“New” Vapor Retarder Jacket

The vapor retarder jacket meets or exceeds all of the requirements of ASTM C 1136, Type III and IV, the industry standard for insulation vapor retarders. The jacket will not yellow or sustain mold growth, and it can be wiped clean with a damp cloth. It is also puncture resistant, and meets a 25 Flame/50 Smoke rating when tested per ASTM E-84.

Self Seal Lap Premium Acrylic Tape

The premium SSL tape used is an aggressive, high performance acrylic pressure sensitive adhesive that assures a vapor-tight seal when applied at temperatures as low as 10° F. This adhesive has been industry proven for over twenty years of service.

2550FS Standard Product Dimensions

Nominal Pipe Size	2250F Insulation Density	Insulation Length	Saddle Length	Saddle Gauge
½" – 3½"	2.5 PCF	9"	6"	20
4" – 8"	2.5 PCF	12"	9"	18
9" – 18"	5.0 PCF	18"	12"	16
20" – 30"	5.0 PCF	24"	18"	14



BUCKAROOS, INC.

9635 Park Davis Drive
Indianapolis, IN 46235
T. 800-969-3113
T. 317-899-9100
F. 317-899-0775



**Providing Performance, Quality, Value & Design
Only from Buckaroos, Inc.**

The Leader in Pipe Insulation Support Systems Since 1990